

**GENERAL NOTES**

1. This drawing is not to scale
2. This drawing is to be read in conjunction with AS 1742.3 & TCAWS V6 2020
3. Non applicable existing signage shall be covered
4. All signage distance shall comply with AS 1742.3 & TCAWS V6 2020
5. In accordance with TCAWS V6 2020 traffic controllers are to assist pedestrians with movement through or around the worksite as required
6. Signage shall be placed on the side of the road adjacent to the traffic flow
7. Removal of the delineation, tapers & signs should be undertaken in the reverse order of erection progressing outwards from the work area

**DIMENSION "D"**

SPEED OF TRAFFIC KM/H	DIMENSION "D" M
45 OR LESS	15-40
46-55	15-60
56-65	45-70
GREATER THAN 65KM/H	EQUAL TO POSTED SPEED

**TOLERANCES**

**POSITIONING OF SIGNS. MIN 10% LESS THAN THE DISTANCE OR LENGTHS GIVEN. MAXIMUM 25% MORE THAN THE DISTANCE OR LENGTHS GIVEN. SPACING OF DELINEATING DEVICES MAXIMUM 10% MORE THAN THE SPACING GIVEN. NO MINIMUM**

**RECOMMENDED TAPER LENGTH**

APPROXIMATE SPEED OF TRAFFIC KM/H	TRAFFIC CONTROL AT BEGINNING OF TAPER	LATERAL SHIFT TAPER	MERGE TAPER
45 OR LESS	15	0	15
46-55	15	15	30
56-65	30	30	60
66-75	N/A	70	115
76-85	N/A	80	130
86-95	N/A	90	145
96-105	N/A	100	160
> 105	N/A	110	180

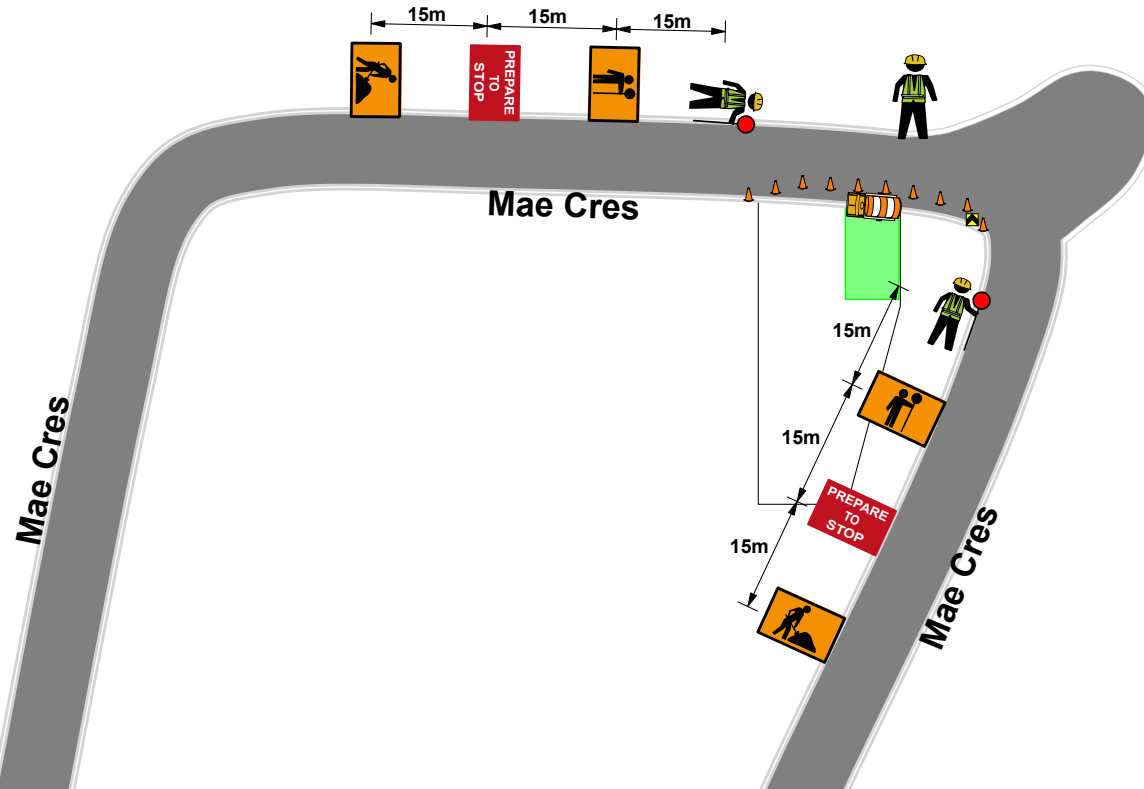
Comments: The Author has drawn this TCP based on the information provided by the client. Prior to implementation of TCP a Safe Work Method Statement must be prepared in consultation with the personnel carrying out the work. Person(s) implementing this TCP must hold current Implement Traffic Management Plans - RIWHS3032D training. Modifications to this TCP must comply with the requirements of the RMS Traffic Control at Work Sites Manual version 6 and AS 1742.3 - 209 Traffic Control for Works on Roads. This TCP has been prepared in accordance with AS 1742.3 - 2009 Traffic Control for Works on Roads and the RMS Traffic Control for Work Sites Manual Version 6 - 2020.

\*For pedestrians safety the footpath surrounding the work site shall be closed signage and barriers shall be installed to clearly indicate alternative route. Pedestrians will be assisted by work crew to follow alternative route.

← PEDESTRIAN TRAVEL PATH → WORK AREA ← PLAN NOT DRAWN TO SCALE

DATE 12/5/2022	PROJECT Driveway	CLIENT Fairmont Homes	PLAN NO. CJS0652
ROAD/SUBURB	17 Mae Crescent, Panania		
CROSS STREET	Bransgrove Rd		
ROAD SPEED	50km		
ROAD TYPE	2 Lane 2 Way		
OPERATION	Dayworks		
AUTHORITY	Canterbury Bankstown Council		

The Traffic Controllers Pty Ltd accepts no liability for the implementation or execution of this TCP unless implemented by authorised The Traffic Controllers Pty Ltd personnel. This TCP maintains the property of The Traffic Controllers Pty Ltd and is not transferable unless express permission is granted by management of The Traffic Controllers Pty Ltd.



**PEDESTRIANS  
WATCH YOUR  
STEP**

**PEDESTRIANS →**

**PEDESTRIANS  
WATCH YOUR  
STEP**

**← PEDESTRIANS**

PEDESTRIANS SIGNS  
TO BE INSTALLED  
IF NEEDED

**THE TRAFFIC  
CONTROLLERS**

P: 8292-0133

F: 1300 558 241

M: 0419 322 710

email:merna@ttcns.com.au

